

AVAILABLE FOR LEASE

# 16050-16070

E DARTMOUTH AVENUE



## RATE

\$12.00-\$15.00/SF NNN

## EXPENSES

TBD

## STYLE

Retail/Office

## AVAILABLE

1,075-3,707 SF

## STORIES

1

## YEAR BUILT

1973

## PARKING

Common Parking Lot

## Karen Zeile

Senior Commercial Advisor

303.947.3665

Karen@KentwoodCommercial.com

## David W. Morrison

Senior Commercial Advisor

303.324.9053

David@KentwoodCommercial.com

All information deemed reliable but not guaranteed and should be independently verified. All properties are subject to prior sale, change or withdrawal. Neither listing broker(s) nor Kentwood Commercial shall be responsible for any typographical errors, misinformation, misprints and shall be held totally harmless.



**Kentwood**  
Commercial

RATE  
**\$12-\$15 SF NNN**

STORIES  
**1**

STYLE  
**Retail/Office**

EXPENSES  
**TBD**

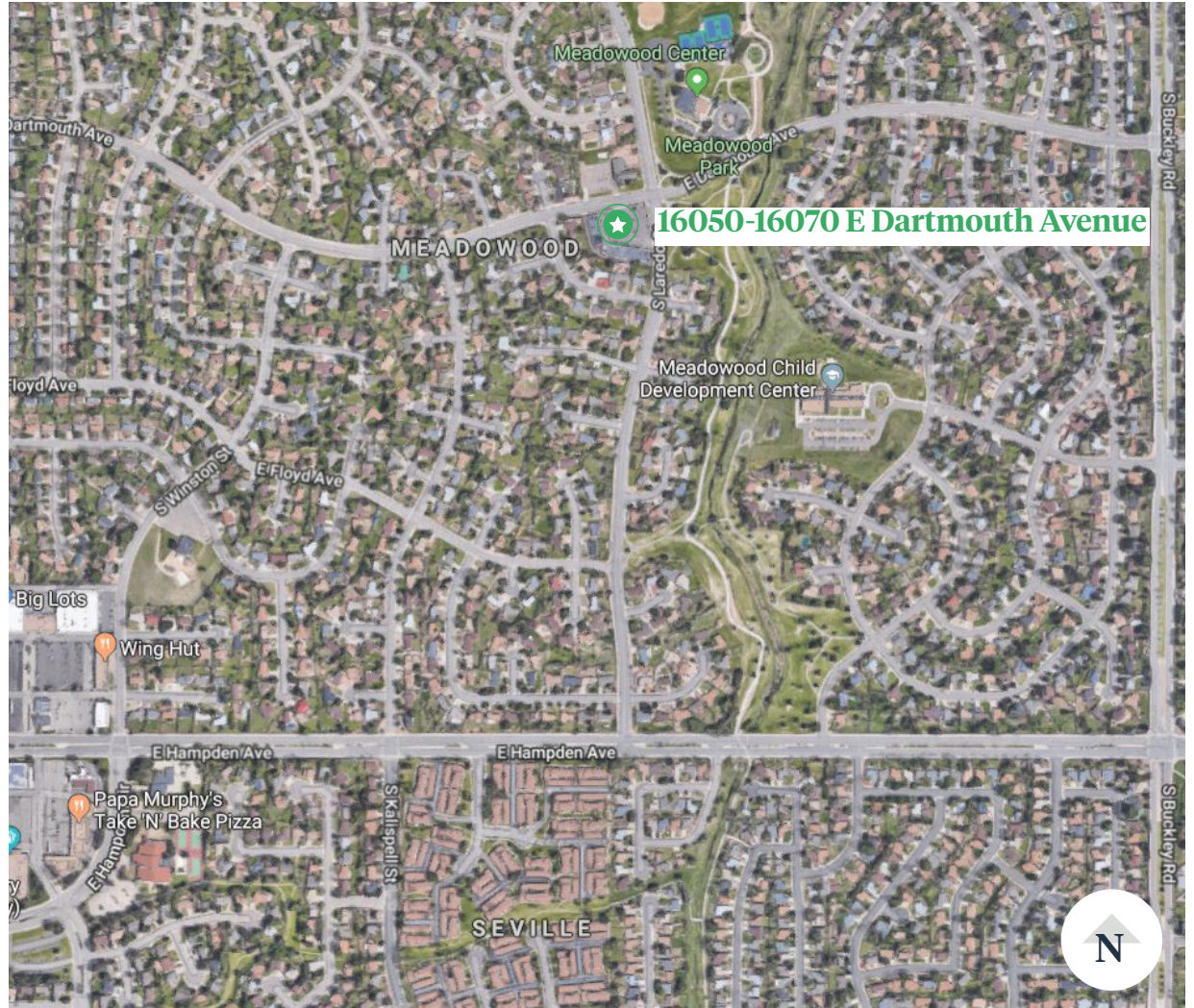
YEAR BUILT  
**1973**

AVAILABLE  
**1,075-3,707 SF**

# 16050-16070

E DARTMOUTH AVENUE

## Area Map



**Karen Zeile**

303.947.3665

Karen@KentwoodCommercial.com

**David Morrison**

303.324.9053

David@KentwoodCommercial.com



**Kentwood**  
Commercial



All information deemed reliable but not guaranteed and should be independently verified. All properties are subject to prior sale, change or withdrawal. Neither listing broker(s) nor Kentwood Commercial shall be responsible for any typographical errors, misinformation, misprints and shall be held totally harmless.

KentwoodCommercial.com